

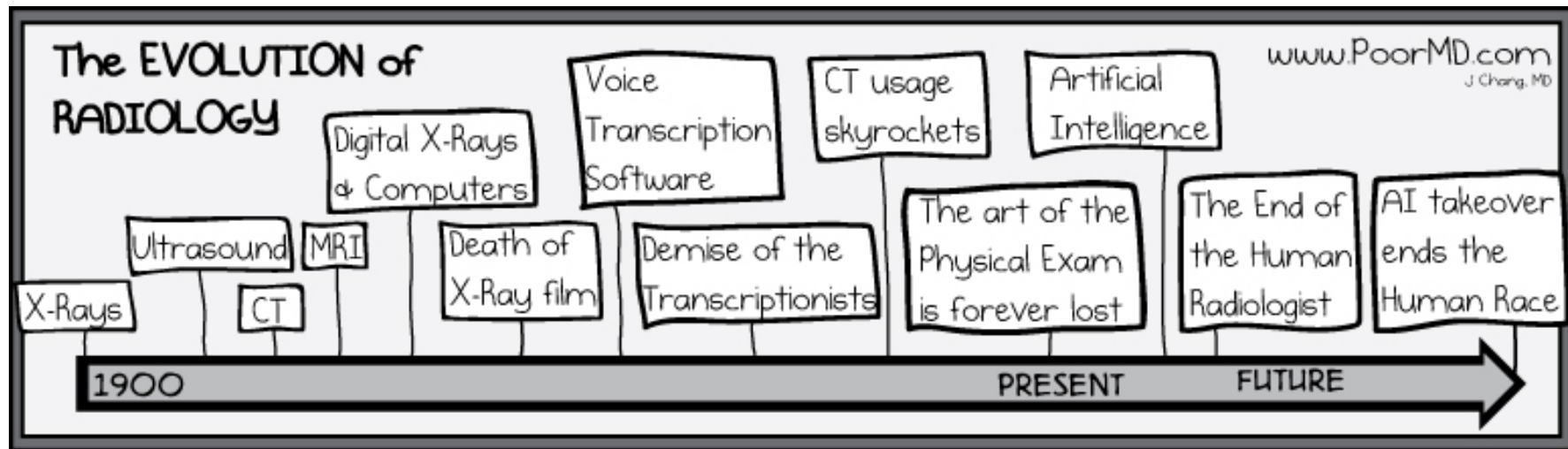
# AI IN IMAGING YOUR DATA AS A STRATEGIC ASSET

ESTEBAN RUBENS  
GLOBAL ENTERPRISE IMAGING PRINCIPAL

PURE STORAGE

@PUREESTEBAN

# AI IN ENTERPRISE IMAGING: HYPE OR NOT?



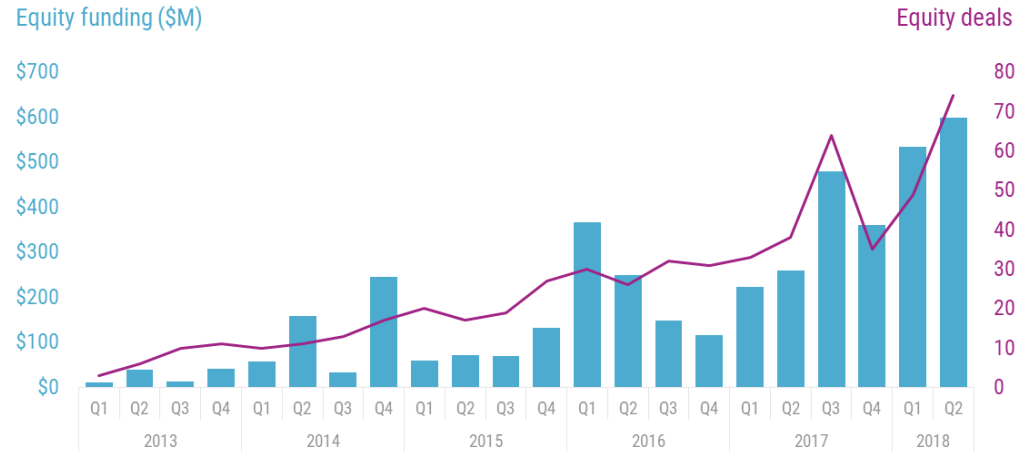
# AI IN HEALTHCARE: HYPE OR NOT?

What is necessary for AI to become a reality in healthcare?

- Support by funding agencies
  - NIH is funding AI
- Recognition by regulators
  - FDA approvals for CADe & CADx
  - FDA *De Novo* process
- Investment by industry

## AI in healthcare funding hit a historic high in Q2'18

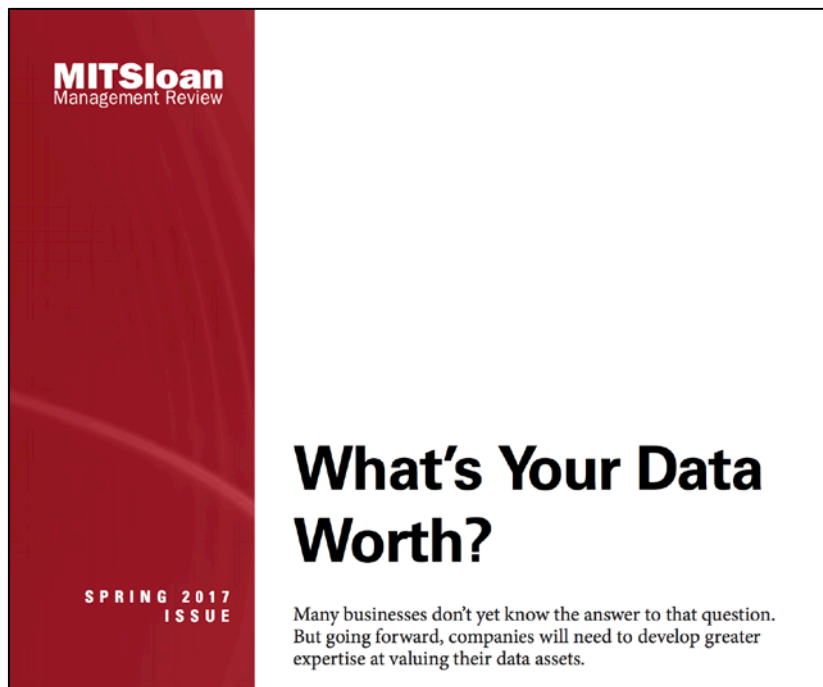
Disclosed equity funding, Q1'13 – Q2'18



Source: cbinsights.com

CBINSIGHTS

# IMAGING DATA IS AN ASSET



**MIT Sloan**  
Management Review

**What's Your Data Worth?**

Many businesses don't yet know the answer to that question. But going forward, companies will need to develop greater expertise at valuing their data assets.

SPRING 2017  
ISSUE



**The Economist**

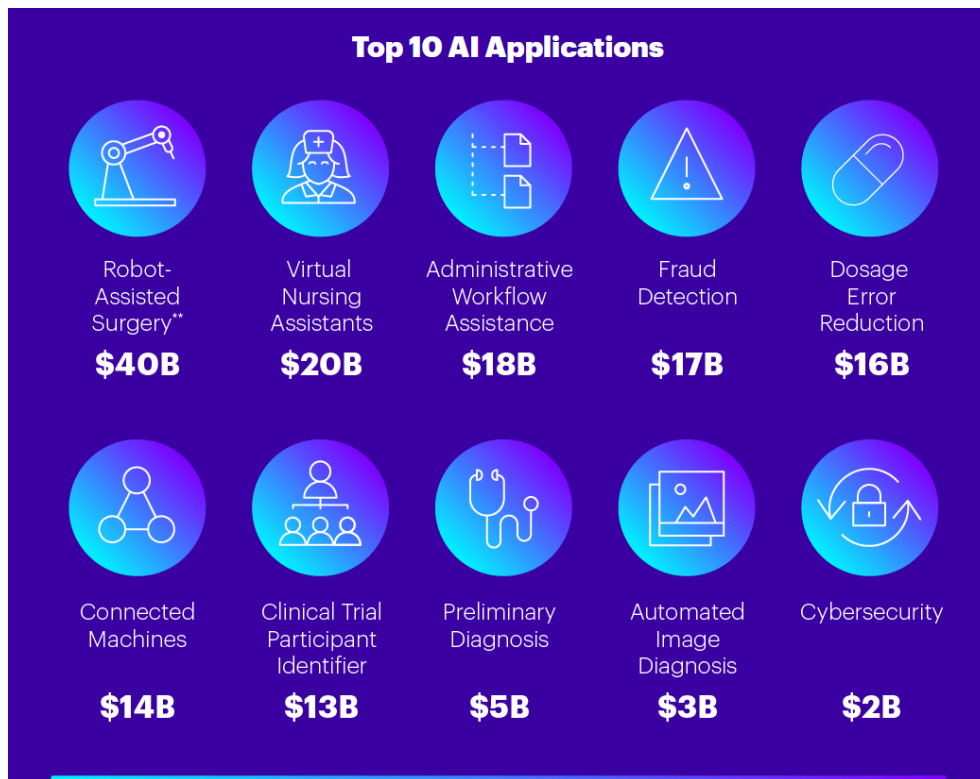
Theresa May v Brussels  
Ten years on: banking after the crisis  
South Korea's unfinished revolution  
Biology, but without the cells

MAY 6TH - 12TH 2017

**The world's most valuable resource**

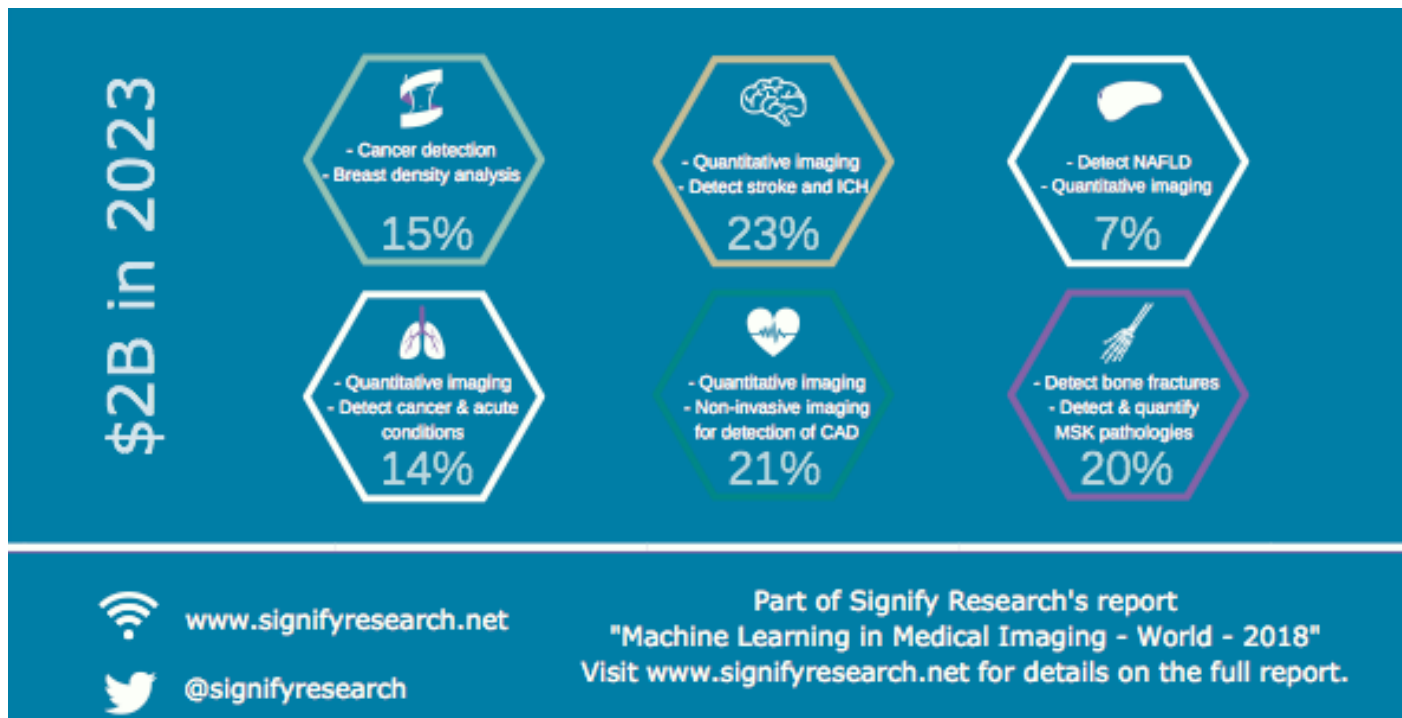
Data and the new rules of competition

# IMAGING DATA IS AN ASSET



Accenture

# IMAGING DATA IS AN ASSET



# AI IN HEALTHCARE

## RADIOLOGIST BURNOUT

Physician burnout is a serious problem, particularly in radiology

RSNA News

### Unique Stressors Lead to Burnout in Radiology

Income and reimbursement issues are among the top reasons radiologists are experiencing high levels of stress and burnout, experts say. **BY MARY HENDERSON**

ACR  
**Bulletin**

ACR Bulletin February 2017

### Battling Burnout and Its Consequences

How can we tackle the increasing incidence of physician stress, anxiety, and depression?

#### Radiologist burnout: Worse than we thought?

By Kate Madden Yee, AuntMinnie.com staff writer

December 28, 2016 -- It's no secret that physicians are susceptible to workplace burnout, and radiologists are no exception. The syndrome can be dangerous, affecting the well-being of physicians and also the quality of care provided to patients. But how common is burnout?



Journal of the American College of Radiology

Available online 16 October 2018

In Press, Corrected Proof



Case Studies in Leadership

#### Prevalence of Burnout Among Pediatric Radiologists

Rama S. Ayyala MD<sup>a</sup>, Firas S. Ahmed MD, MPH<sup>d</sup>, Carrie Ruzal-Shapiro MD<sup>b</sup>, George A. Taylor MD<sup>c</sup>

- <sup>a</sup> Department of Diagnostic Imaging, Rhode Island Hospital-Hasbro Children's Hospital, Warren Alpert Medical School of Brown University, Providence, Rhode Island
- <sup>b</sup> Department of Radiology, Columbia University Medical Center, Morgan Stanley Children's Hospital, New York, New York
- <sup>c</sup> Department of Radiology, Columbia University Medical Center, New York, New York
- <sup>d</sup> Department of Radiology, Boston Children's Hospital, Harvard Medical School, Boston, Massachusetts

Available online 16 October 2018.

Show less

<https://doi.org/10.1016/j.jacr.2018.08.016>

Get rights and content

03/29/2017 | Partners in News

Workforce Development Medical Education

Partners HealthCare President and CEO David Torchiana, MD, joins group of health system leaders in recognizing physician burnout as a public health crisis



# AI IN EI FILLS THE GAPS

DATA DELUGE

## Shortage of radiologists

"There are only **650 registered radiology specialists for Indonesia's 235 million population**. A similar trend is seen as well in densely populated countries such as **Malaysia and Thailand**."

Dr Shih-chang Wang,

University of Sydney

6,590 views | Nov 8, 2014, 09:10pm

Philippine Startup Takes On Global Radiologist Shortage

Techonomy Contributor  
Techonomy Contributor Group  
Techonomy

Amrithar  
Posted at: Feb 9, 2017, 12:55 AM; last updated: Feb 9, 2017, 12:55 AM (IST)  
Shortage of radiologists aggravates patients' misery

## Bengaluru solves crippling radiologist shortage through teleradiology, e-lectures

By Nirad Mudur, Bangalore Mirror Bureau | Updated: Oct 3, 2016,

## Radiologist shortage 'affecting cancer care' in the UK

By Hugh Pym  
Health editor

22 August 2018

NEWS

Home | Video | World | US & Canada | UK | Business | Tech | Science | Stories | Entertainment

Scotland | Scotland Politics | Scotland Business | Edinburgh, Fife & East | Glasgow & West

Radiologist shortage in Scotland 'red alert' warning

14 August 2018

Shortages of radiologists and pathologists? Alberta Health Services responds.



# IMAGING DATA IS AN ASSET

Vast amounts of annotated data

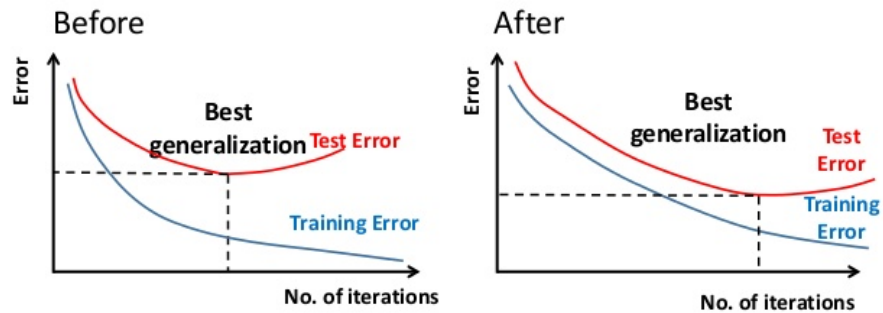
+

Multiple training runs

---

Increase model inference accuracy

Solution: Increase amount of training data



Microsoft

# LOCAL MODEL TRAINING IS NECESSARY

**Variable generalization performance of a deep learning model to detect pneumonia in chest radiographs: A cross-sectional study**

<https://doi.org/10.1371/journal.pmed.1002683>

## Conclusion

**Pneumonia-screening CNNs achieved better internal than external performance in 3 out of 5 natural comparisons.** When models were trained on pooled data from sites with different pneumonia prevalence, they performed better on new pooled data from these sites but not on external data. CNNs robustly identified hospital system and department within a hospital, which can have large differences in disease burden and may confound predictions.

# LOCAL MODEL TRAINING IS NECESSARY

"If a given hospital, clinic, or practice has significant variation in their population's makeup or imaging protocols, then it is highly likely that this model doesn't do 'X' and perform as it is supposed to. **Don't trust any algorithms without validating them on your local data, patients, or protocols!**"

<https://www.auntminnie.com/index.aspx?sec=sup&sub=aic&pag=dis&ItemID=123535>

# LOCAL MODEL TRAINING IS NECESSARY

## Better medicine through machine learning: What's real, and what's artificial?

<https://journals.plos.org/plosmedicine/article?id=10.1371/journal.pmed.1002721>

**“Irrational extrapolation”**—the assumption that algorithms trained on an easy-to-obtain set of patients or data will lead to accurate models that act in each patient's best interest—**must be stringently avoided** until algorithms can correct for such biases and use clinical data to reason about disease severity and trajectory.

# INFRASTRUCTURE MATTERS

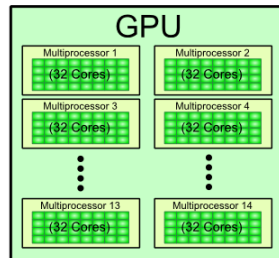
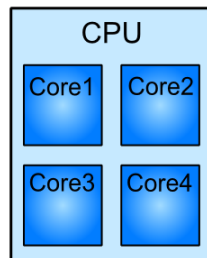
- What is **GPU starvation** anyway?
- Why do we care?
- How is this related to **AI in healthcare**?



# INFRASTRUCTURE MATTERS

- **Fast compute**
  - GPUs for highly parallel workloads
- **Fast networks**
  - 100 Gbps!
- **Fast storage**
  - Highly-scalable, low-latency storage optimized for parallel access
  - Scale-out all-flash arrays

CPU/GPU Architecture Comparison



# INFRASTRUCTURE MATTERS

- Bring AI from the lab to the bedside
- Is your IT infrastructure ready?
- What may have worked yesterday ~~may~~ **not** will not work tomorrow
- Retrofitting is not always a good idea



# INTEGRATING AI TO EXISTING WORKFLOWS

- **Train models appropriately**
- **Clinical use requires:**
  - **High accuracy**
  - **Specificity & sensitivity depending on use**
- **Low latency**
  - **Even under heavy load**



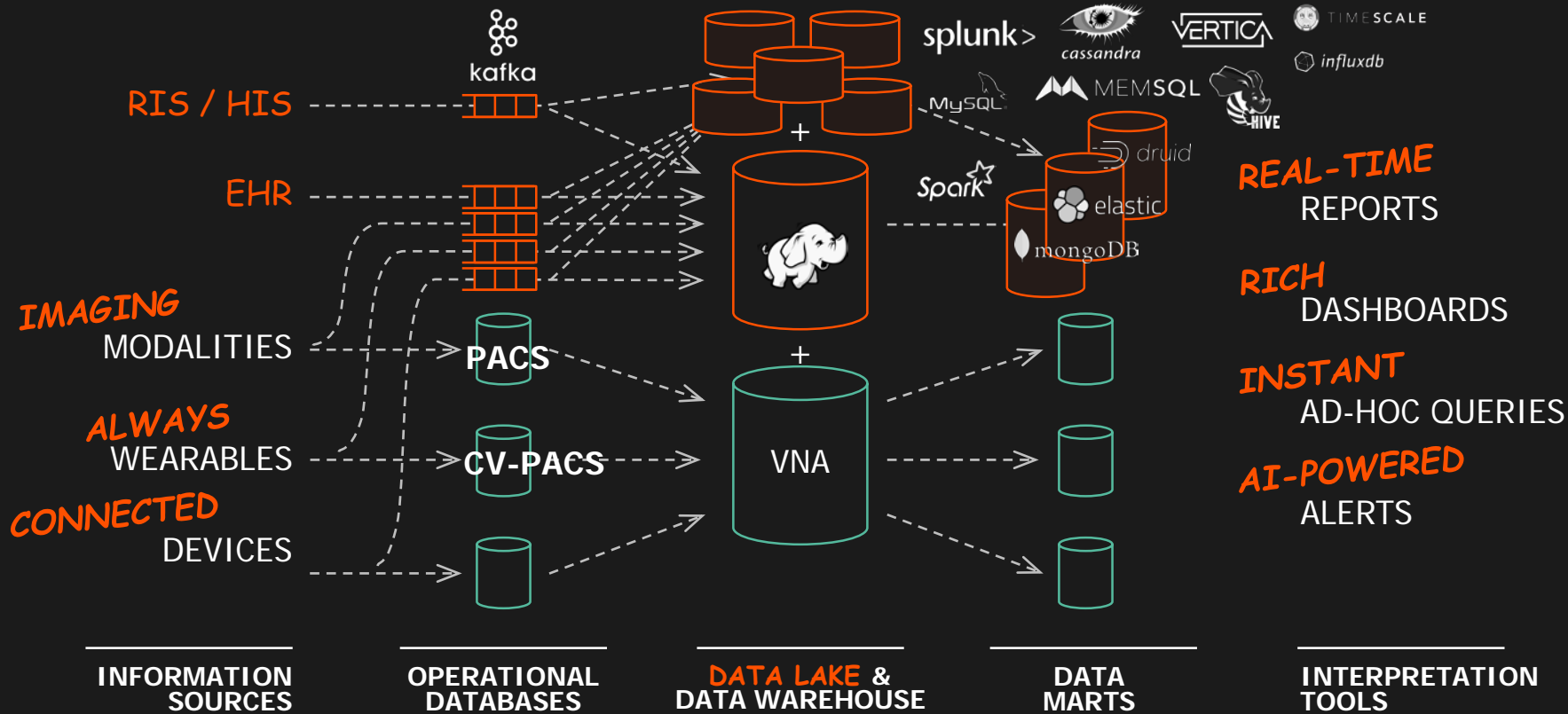


# DATA HUB: CLINICAL & RESEARCH IMAGING

- Most organizations have data silos
  - Silo for clinical data (PACS, VNA)
  - Silo for research
- Moving data between silos is slow and annoying



# DATA LAKE OR A DATA ZOO?



# KEY TAKEAWAYS

- **Data is valuable in general, more so in healthcare**
  - Healthcare data is extremely valuable to train AI/DL models
- **Everyone should be involved in training models**
  - No one can expect to rely on shrink-wrapped models or products for AI in Imaging
- **Infrastructure Matters for AI in Imaging**
  - GPU compute, fast networks, fast storage
- **It is possible to start small**
  - Anyone can do this
  - Everyone should
  - Open source software, online courseware, simple infrastructure

